

ALELUIA (ALEGRE)

INTRO

with 2nd

Voz

Handwritten musical notation for the Intro section. It features a treble clef with a key signature of one sharp (F#) and a time signature of 6/8. The melody is written on a single staff. Below the staff, there are several measures of chords: C#9, G/B, A#7, A#7/G, D#9/F#, G, D#9/F#, and Em Em#D. There are also some handwritten notes like "3 2 3 3 3 2" and "3 3 1 0 3".

Handwritten musical notation for the first section of the song. It features a treble clef with a key signature of one sharp (F#) and a time signature of 6/8. The melody is written on a single staff. Below the staff, there are several measures of chords: A#7, A#7/G, D#9/F#, G, D#9/F#, Em, Em#D, C, D#7, and G. There are also some handwritten notes like "Pima", "Pia Pia", and "Pim".

Tu palavra es nra. luz Aleluia Aleluia En tu pa. me habla

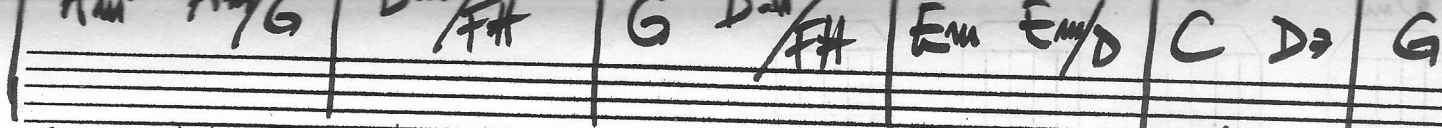
Handwritten musical notation for the second section of the song. It features a treble clef with a key signature of one sharp (F#) and a time signature of 6/8. The melody is written on a single staff. Below the staff, there are several measures of chords: F#m7(b9), B7, Em, Bm7, C#9, G, D#9/F#, and Em. There are also some handwritten notes like "Pimami", "Pia Pia", and "Pimami".

INTERLUDD

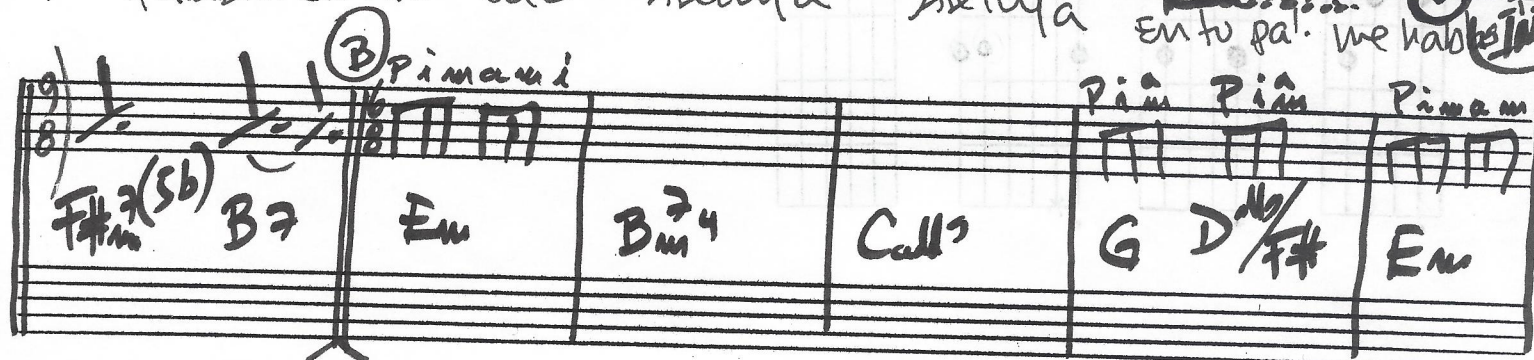
Handwritten musical notation for the third section of the song. It features a treble clef with a key signature of one sharp (F#) and a time signature of 6/8. The melody is written on a single staff. Below the staff, there are several measures of chords: Bm7, C#9, D4, D, G, D#9/F#, Em, Em#D, A#7, and A#7/G. There are also some handwritten notes like "CORO idem", "Pia Pia", and "Pimami".

Handwritten musical notation for the fourth section of the song. It features a treble clef with a key signature of one sharp (F#) and a time signature of 6/8. The melody is written on a single staff. Below the staff, there are several measures of chords: D#9/F#, G, D#9/F#, Em, Em#D, C, D#7, G#9, and G#9. There are also some handwritten notes like "Pimami", "Pia Pia", and "Pimami".

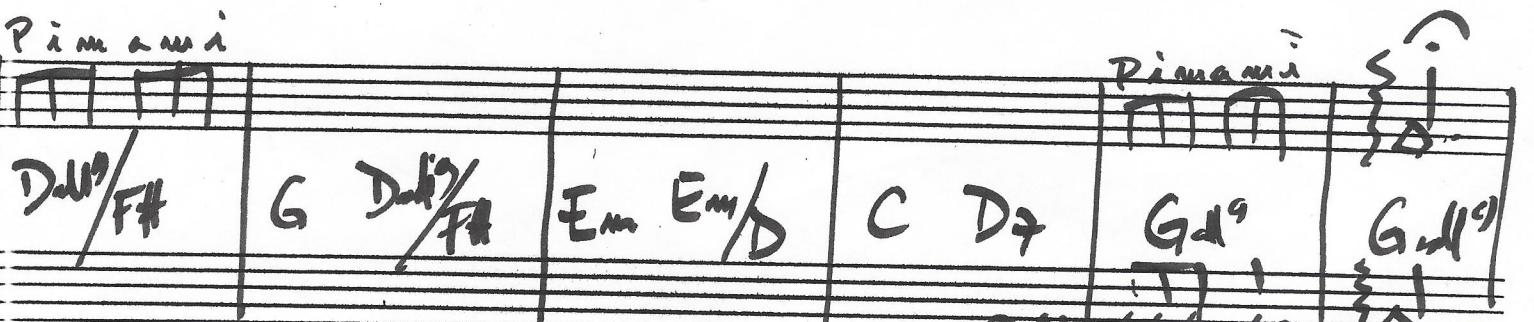
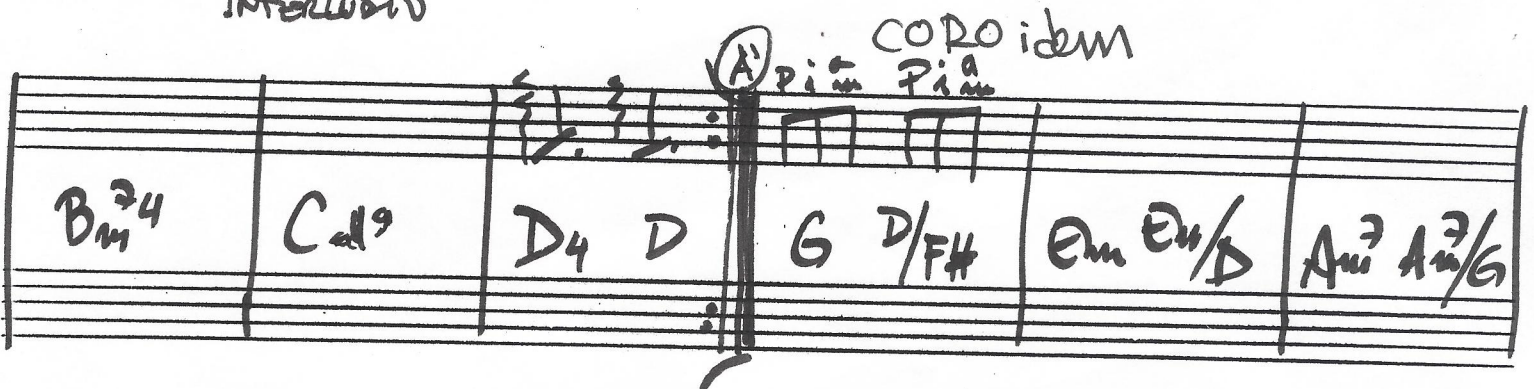
Handwritten musical notation for the fifth section of the song. It features a treble clef with a key signature of one sharp (F#) and a time signature of 6/8. The melody is written on a single staff. Below the staff, there are several measures of chords: Em, Em#D, C, G/B, A#7, G, F#m7(b9), and B7. There are also some handwritten notes like "INTERLUDD", "Pia Pia", and "Pimami".



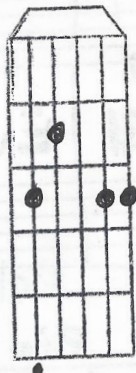
Tu palavra es uia. Luz Aleluia Aleluia *Rall...* En tu pa. me habes *in*



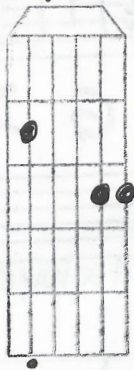
INTERLUDDO



Cadd^o



G/B



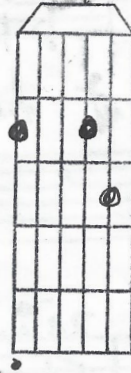
A⁷_{mi}



A⁷_{mi}/G



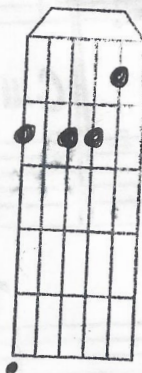
Dadd⁹/F#



E^{mi}/D



F#⁷_{mi} (5b)



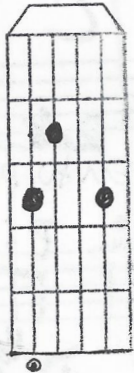
B⁷



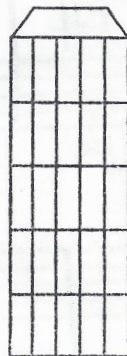
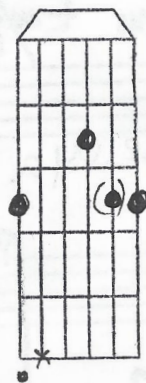
B⁷_{mi}



Cadd⁹



Gadd⁹



ALELOYA. (ALEGRE)

Handwritten musical score for guitar, featuring a treble clef, key signature of one sharp (F#), and a 6/8 time signature. The score is divided into two systems. The first system has four measures: Measure 1 (G, D7, 7 0 7 5 3 5), Measure 2 (Fm, 3 0 3 3 0 3), Measure 3 (Am, G, 5 5 5 3 3 3), and Measure 4 (5 3 5 5 (3)(5)). The second system has four measures: Measure 1 (G, D7), Measure 2 (Fm, 8 8 8 10 10 10), Measure 3 (C, D, 2 8 7 7), and Measure 4 (5 5 7 7). The score includes various musical notations such as chords, notes, and fingerings.

B

F#m* Bm7** Cadd9*** G D7 F#m* Bm7**

7 8 7 5 7 5 3 3 7 5

Call 9 ***

Twice

Handwritten musical score for the song "Twice" by the group TWICE. The score is written on two staves. The top staff uses a treble clef and a key signature of one sharp (F#). The bottom staff uses a bass clef. The music is in 6/8 time. The top staff contains a melody with eighth and sixteenth notes, and a final measure with a double bar line. The bottom staff contains a bass line with eighth and sixteenth notes, and a final measure with a double bar line.